

Ceramic Urinals with the Radar Flushing Unit

SLP 24R, SLP 25R



SLP 24 - ALESSI
WITH A COVER

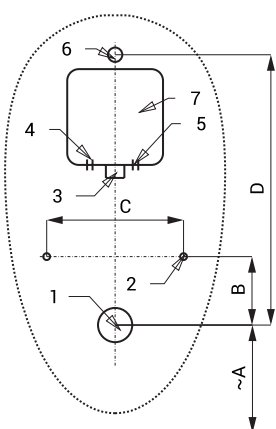


SLP 25 - ALESSI
WITHOUT A COVER

Characteristics

- easy installation
- whole flushing unit is placed behind the urinal
- system reacts only on the direct use of the urinal (it analyses changes, which are proceeded inside of the urinal, when a liquid is flowing through)
- adjustable flushing time 0,5 - 15,5 s
- parameters adjustment by remote control SLD 04 without the necessity to dismantle the urinal from the wall (acoustic setting indication)
- automatic flushing after each 6 hours non-use
- possibility to regulate a water flow by the angle valve
- radar flushing unit recharges a water to the siphon after each flushing

Installation Drawing



- 1 - water outlet Ø 50 mm
- 2 - holes for fitting
- 3 - water supply
- 4 - power supply 230 V AC (SLP 24/25RZ)
- 5 - power supply 24 V DC (SLP 24/25R)
- 6 - inlet fitting
- 7 - mounting box

SLP 24, 25

Technical Specification

Dimension of mounting box	140 x 140 x 75 mm
Operating voltage	
▪ SLP 24R, 25R	24 V DC
▪ SLP 24RZ, 25RZ	230 V AC/50 Hz
Power input	
▪ operating by 24 V DC	8 W
Recommended flow pressure	0,1 - 0,6 MPa
Rate of flow	18 l/min (inf. data)
Water inlet	male thread G 3/4"
Water outlet	inlet fitting with a rubber sealing

Dimensions (mm)	A	B	C	D
SLP 24 - ALESSI	420	100	200	395
SLP 25 - ALESSI	420	100	200	395

* for the height of the front edge of the urinal 650 mm above floor



SLA 11

SLA 11A

SLA 11B

SLA 11C

Supply Specification

SLP 24R	- Supply No. 01244	ceramic urinal with radar flushing unit, plastic mounting box with brass screw coupling, electromagnetic valve and ball valve, inlet fitting with a rubber sealing, mounting set, siphon, plastic cover (SLP 24xx), power supply (only for models with index RZ)
SLP 25R	- Supply No. 01254	
SLP 24RZ	- Supply No. 01245	
SLP 25RZ	- Supply No. 01255	

Recommended Accessories

SLZ 01Y	- Supply No. 05012	power supply 24 V DC for operating of max. 5 pcs. of flushing units
SLZ 01Z	- Supply No. 05011	power supply 24 V DC for operating of max. 9 pcs. of flushing units
SLZ 04Y	- Supply No. 05042	power supply 24 V DC on DIN rail, for operating of max. 5 pcs. of flushing units
SLZ 04Z	- Supply No. 05041	power supply 24 V DC on DIN rail, for operating of max. 9 pcs. of flushing units
SLZ 04X	- Supply No. 10049	power supply 24 V DC on DIN rail, for operating of max. 15 pcs. of flushing units
SLZ 06	- Supply No. 05060	power supply 24 V DC for operating of max. 1 pc. of flushing unit
SLD 04	- Supply No. 07040	remote control for an adjustment of parameters
SLA 11	- Supply No. 06110	deodorising urinal screen - orange, mango scent
SLA 11A	- Supply No. 06111	deodorising urinal screen - red, kiwi and grapefruit scent
SLA 11B	- Supply No. 06112	deodorising urinal screen - transparent, honeysuckle scent
SLA 11C	- Supply No. 06113	deodorising urinal screen - blue, cotton bloom scent
SLR 01	- Supply No. 08010	mounting frame to the plasterboard for the urinal with radar flushing unit on the mounting rail